

**Florence County Ordinance:**  
 ATV prohibited on groomed snowmobile trails when temperature is above 28°. ATV trails are closed the month of April.

**STAY ON THE TRAILS  
 OR WE WILL  
 LOSE THEM!**

Check with Wild Rivers Interpretive Center for info on town roads open to ATV riding  
 888-889-0049

**GPS READINGS**

Jct. 1 45.55.10 N 88.15.14 W	Jct. 10 45.46.22 N 88.10.15 W
Jct. 2 45.53.48 N 88.15.45 W	Jct. 11 45.49.39 N 88.13.39 W
Jct. 3 45.56.46 N 88.36.03 W	Jct. 12 45.52.37 N 88.11.42 W
Jct. 4 45.56.25 N 88.38.16 W	Jct. 13 45.52.30 N 88.09.48 W
Jct. 5 45.49.37 N 88.40.24 W	Jct. 14 45.52.11 N 88.05.35 W
Jct. 6 45.46.46 N 88.21.39 W	Jct. 15 45.53.16 N 88.04.12 W
Jct. 7 45.46.32 N 88.20.43 W	Jct. 16 45.58.05 N 88.35.35 W
Jct. 8 45.43.41 N 88.19.42 W	Jct. 17 45.50.30 N 88.13.33 W
Jct. 9 45.43.05 N 88.14.31 W	Jct. 18 45.53.41 N 88.17.37 W

**Trailhead & Overnight Parking**  
 • Nicolet Trail trailhead in Tipton  
 • ATV park: Trailhead south of Fisher lake  
 • Wild Rivers Interpretive Center - free overnight parking in lower level parking lots

**LEGEND**

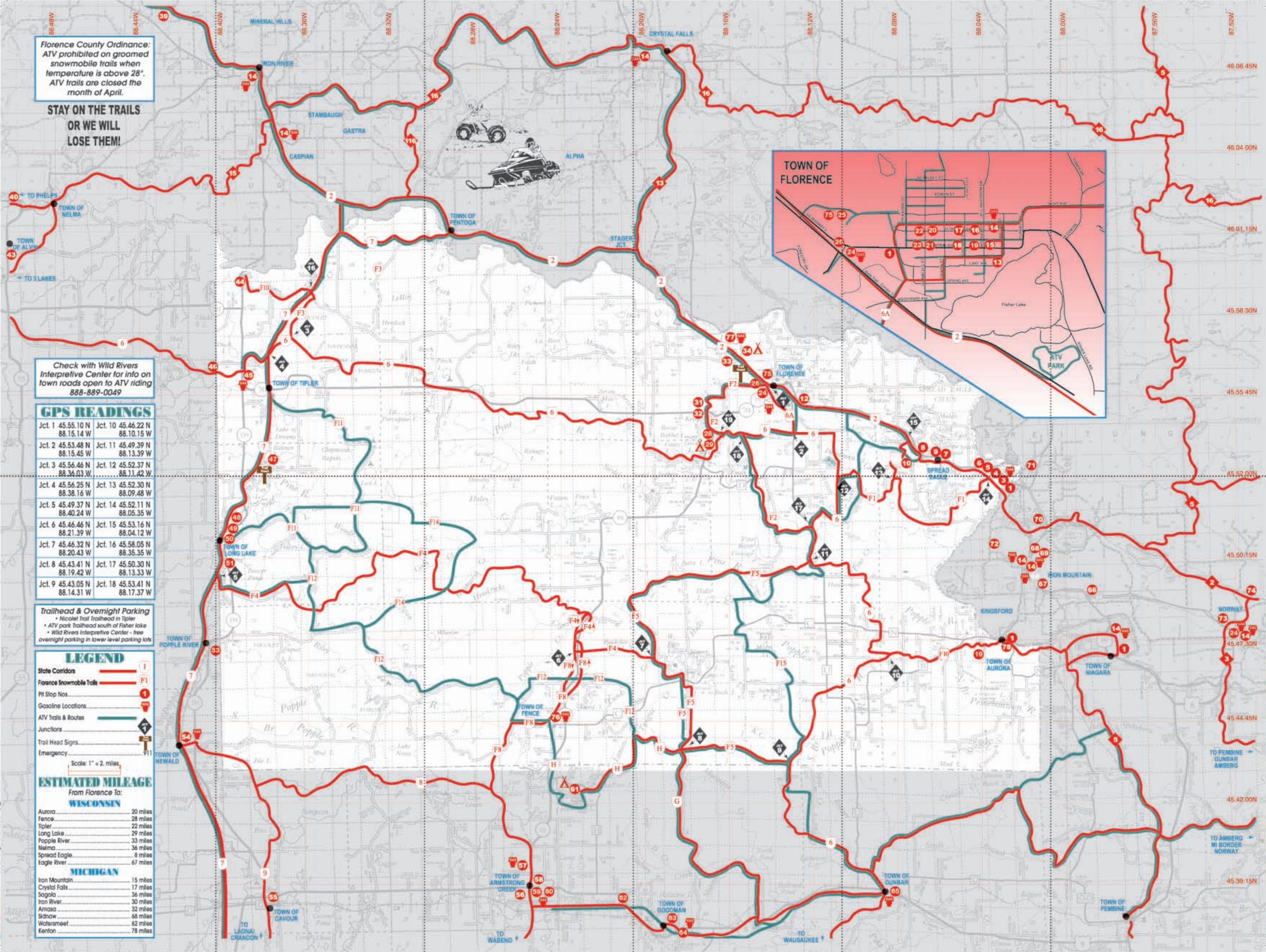
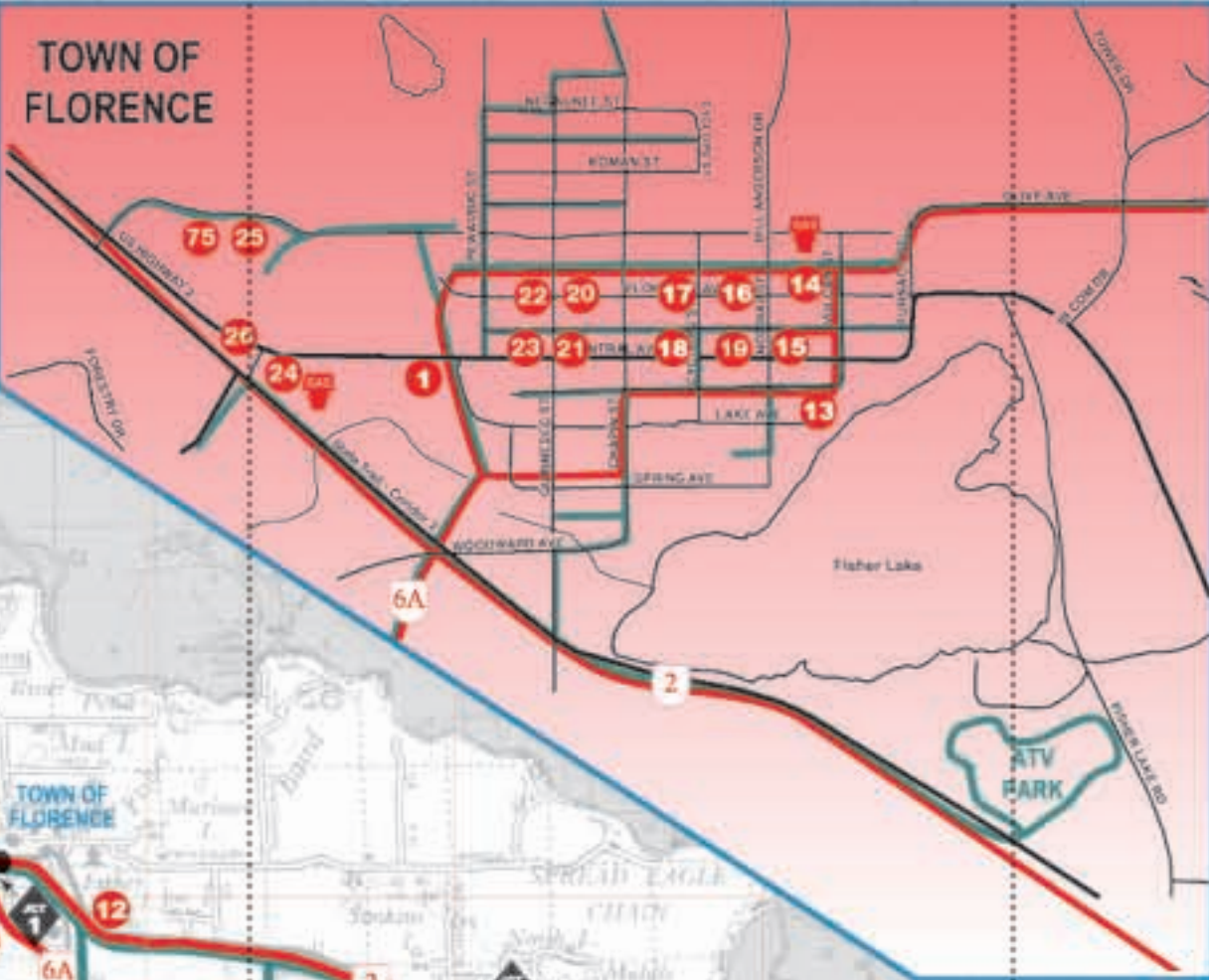
- State Corridors
- Florence Snowmobile Trails
- Pit Stop Nos.
- Gasoline Locations
- ATV Trails & Routes
- Junctions
- Trail Head Signs
- Emergency

Scale: 1" = 2 miles

**ESTIMATED MILEAGE**

From Florence To:

WISCONSIN	
Aurora	20 miles
Fence	28 miles
Tipton	22 miles
Long Lake	29 miles
Popple River	33 miles
Nelma	36 miles
Spread Eagle	8 miles
Eagle River	67 miles
MICHIGAN	
Iron Mountain	15 miles
Crystal Falls	17 miles
Sagola	36 miles
Iron River	30 miles
Amasa	32 miles
Sidnaw	68 miles
Watersmeet	62 miles
Kenton	78 miles



CMYK FOLDS